

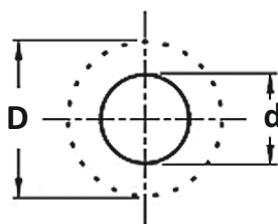
Oplot TOZ



materiał: poliester

temp. pracy: -50°C do + 150°C

palność: UL-94 VW-1

tolerancja: ±5%



TYP	 WYMIAR [mm]		OPAKOWANIE  [m]			
	NOMINALNY					ZAKRES PRACY
	W [mm]	W ["]	d [mm]	D [mm]		
TOZ-PE3	3,0	1/8	1,0	6,0	300	■
TOZ-PE6	6,0	1/4	3,0	9,0	300	■
TOZ-PE8	8,0	5/16	5,0	16,0	300	■
TOZ-PE10	10,0	3/8	7,0	19,0	350	■
TOZ-PE12	12,0	1/2	8,0	24,0	300	■
TOZ-PE16	16,0	5/8	10,0	27,0	250	■
TOZ-PE19	19,0	3/4	14,0	30,0	200	■
TOZ-PE25	25,0	1	18,0	35,0	200	■
TOZ-PE32	32,0	1 1/4	20,0	50,0	150	■
TOZ-PE38	38,0	1 1/2	30,0	60,0	100	■
TOZ-PE45	45,0	1 3/4	35,0	75,0	100	■
TOZ-PE51	51,0	2	40,0	80,0	100	■