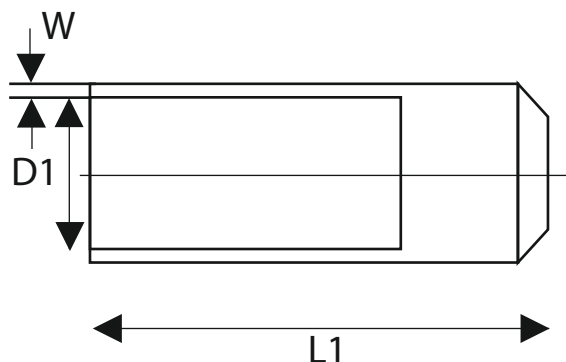




Core End KTK

material: polyolefin
 work temp.: -40°C do +110°C
 min. shrinking temp.: +110°C
 full shrinking temp.: +125°C
 tolerance: ±5%



TYPE	FOR CABLE DIMENSION [mm]	SIZES				QUANTITY [pcs]	
		INNER DIAMETER		WALL THICKNESS	LENGTH		
		BEFORE SHRINKING D1 [mm]	AFTER SHRINKING D1 [mm]				
KTK-12/4	5 - 8	12	4	2,3	40	1	■
KTK-25/8	10 - 20	25	8	2,5	75	1	■
KTK-33/11	12 - 30	33	11	2,5	115	1	■
KTK-40/15	17 - 35	40	15	3,3	120	1	■
KTK-55/25	30 - 47	55	25	3,5	170	1	■
KTK-75/35	42 - 68	75	35	4,0	140	1	■
KTK-100/45	55 - 90	100	45	4,0	160	1	■
KTK-120/60	55 - 110	120	45	4,0	160	1	■

RoHS
Compliant